



YMCA SUMMER DAY

CAMP

FIELD GUIDE 2024

Registration Opens Online
Monday, March 18th, 2024 • 8:00am



Welcome to Camp!

Meeting new friends, learning new skills, and enjoying fun-filled days in a caring, supervised environment is what YMCA Day Camps is all about! We are committed to giving your child the support, care and fun that they deserve.



Website:
YMCAHBBDayCamps.ca



Email:
Hamburl.daycamps@ymcahbb.ca



Registration link:
ymcahbb.campbrainregistration.com

YMCA Core Values

The YMCA is committed to helping children grow by teaching and reinforcing:

- **CARING**
- **HONESTY**
- **INCLUSION**
- **RESPECT**
- **RESPONSIBILITY**

YMCA Healthy Child Development

The YMCA believes in every child's potential to shine. Day Camp Staff are trained in YMCA Canada's nationally recognized YMCA Healthy Child Development curriculum.

The principles of the Healthy Child Development focus on the "Y Way of Working with Children" including the impact of YMCA core values, creating developmentally appropriate programs and activities, and the importance of relationship building.

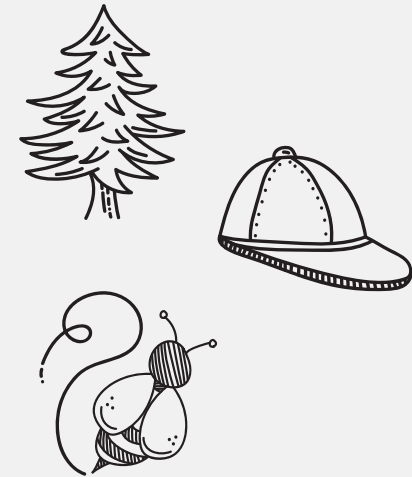
Healthy Child Development is a cornerstone of the YMCA Day program, and helps campers and staff feel included, build developmental assets, and feel supported to reach their full potential.

“YMCA Day Camp Chippewa provides a safe, inclusive atmosphere that allows children to explore and try new activities with confidence and joy.

Parent

Table of Contents

Note to Families	5
Planning Your Summer - Selecting the Right Camp	6
Camp Chippewa – Christie Lake Conservation Area	9
Specialty Camps – Christie Lake Conservation Area	10
Community Camps	12
A Day At Camp	13
Helping Hands – Inclusion Support Program	15
Leadership Development Program	16
Extended Camp Care Options	18
Bus Routes	19
Preparing for Camp	24
How to Register – Payment Methods & Financial Assistance	29





Dear Families...



We are thrilled to welcome you to YMCA Day Camp this summer!

Whether you are a camper returning for another memorable summer, or a joining us for the first time, we are excited to provide a safe, supportive and inclusive environment for your camper to thrive and make memories to last a lifetime.

We believe in the transformative power of camp and we strive to create an environment where every camper and staff member has the opportunity to explore, grow and learn in a safe and fun setting.

Our camp team is ready to provide another summer of high-quality camp programs and to provide your camper with fun activities to ensure their experience is filled with excitement and discovery.

See you at camp!

AJ Phillips,
Manager, YMCA Day Camps

YMCA Staff Team

Our counsellors are university, college and high school students who are trained to ensure your child's experience is one that will be cherished and remembered for many years. Many staff members are former YMCA Day Campers! In addition to refining their leadership and program skills, these individuals also concentrate on developing and preparing the summer day camp programs.

Many counsellors and support staff have been with us for several years. These individuals make a wonderful camping experience possible by providing a safe and welcoming environment in which your child will learn, play and have fun. All camp staff are certified in Standard First Aid and CPR-C and are trained to administer EpiPens. Staff have received dedicated training in programming, emergency procedures, YMCA behaviour management strategies and YMCA Canada's Healthy Child Development Curriculum.

The YMCA of Hamilton Burlington Brantford is committed to creating an inclusive, diverse, equitable and accessible environment.

We welcome staff from all communities including, but not limited to, Indigenous, 2SLGBTQIA+, BIPOC, and Disabled communities.

Planning Your Summer – Selecting the Right Camp

All YMCA Day Camps include some outdoor play, and campers participate in a wide variety of active games, quiet games and traditional camp activities.

Selecting the camp that interests your child is essential to ensuring an enjoyable experience at YMCA Day Camps.

The YMCA offers two types of camps:

- **Community Camps**
- **Outdoor Day Camps**

Community Camp programming is offered indoors and outdoors. Outdoor Camp is offered entirely outdoors.

Swimming

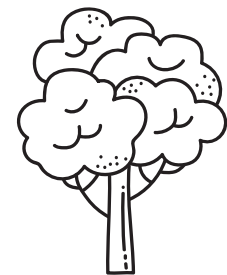
Outdoor camps at Christie Lake Conservation Area swim at a lifeguard supervised waterfront. Community Camps swim at local YMCA's and community pools.

Camp Hours and Session Length

All our camps run from 9am - 4pm. Each session is one week in length. We encourage families to choose a variety of camp options for their child.

Age Requirement

To ensure developmentally appropriate activities and programming, children must meet the age requirement before the camp session begins.





Camp Locations and Sessions

Camp Chippewa-Christie Lake Conservation Area:

Campers are bussed to Christie Lake from Hamilton, Burlington and Brantford for no extra charge or can be dropped off at 9:00 am at Christie Lake and picked up at 4:00 pm at the YMCA Camp Office.

Burlington Community Camp*:

Tansley Woods Community Centre - 1996 Itabashi Way

Brantford Community Camp*:

Laurier Brantford YMCA - 100 Water Street

Hamilton Community Camp*:

Queen Victoria Public School - 166 Forest Avenue

*Community Camps do not offer bussing. All campers must be dropped off and picked up from their chosen camp location.

PLEASE NOTE: Locations are subject to change based on availability.

Subsidies are available to support access to camp for children. Please see page 31 for more information.

SESSIONS	JULY				
Session 1*	1	2	3	4	5
Session 2	8	9	10	11	12
Session 3	15	16	17	18	19
Session 4	22	23	24	25	26
SESSIONS	AUGUST				
Session 5	29	30	31	1	2
Session 6*	5	6	7	8	9
Session 7	12	13	14	15	16
Session 8	19	20	21	22	23

*Indicates a 4 day week due to holidays.



Camp Chippewa – Christie Lake Conservation Area

Located in the majestic surroundings of Christie Lake Conservation Area, Camp Chippewa includes spacious playing fields, a beautiful, wooded area for supervised explorations, and a safe waterfront setting. Campers will spend their days outdoors and experience a combination of traditional day camp activities such as arts and crafts, waterfront swimming, archery, canoeing, and wilderness and environmental science pursuits.

Ages: 6 – 13 Campers will be placed in developmentally appropriate age groups.

Staff to Camper Ratio: 1:10

Bussing: Routes available from locations in Hamilton, Burlington, and Brantford. See page 19.

Sessions: 1 – 8

Fees: Sessions 1, 6 (short weeks)	\$191
Sessions 2-5, 7-8	\$239

PLEASE NOTE: Christie Lake Conservation Area is an outdoor camp with covered pavilions available. During inclement weather, children will participate in low-activity games under the pavilions. There is no indoor option at Christie Lake Conservation Area. Please send warmer clothes for these days. Use of Christie Lake Conservation Area's beachfront is dependent on clear water tests from the Ministry of Health. Christie Lake Conservation Area is a fully outdoor environment and campers spend time in forested areas. Please send your child with appropriate clothing, or bug spray to avoid mosquito bites.

Refunds will not be given for inclement weather, matters of environmental surroundings or waterfront closure.



Swimming: Safe and fun water games will be provided for all who attend camp. All campers six years of age must wear a life jacket. Everyone will be tested to determine swimming capabilities before doing any water-based activities. Campers must pass a swim test to enter the deeper area.

Field Games/Initiatives: These activities blend traditional and wacky games using a team approach.

Hiking: Throughout the week, children will have opportunities as a group to explore hiking trails, and boardwalks through the southern Ontario Wetlands which are some of the most biologically diverse ecosystems in the world.

Arts and Crafts: Campers will have the opportunity to work individually and in groups, using many different mediums to explore their creative and artistic side. Take home crafts include; friendship bracelets, working with natural and foraged materials.

Archery and Sports: Campers will learn the proper use of a bow and arrow. Each participant will be assisted by staff and taught the parts, proper use of the equipment, and the safety procedures. Campers must adhere to all safety regulations in order to participate in this program.

Canoeing: During the week, campers will have the opportunity to go canoeing (weather permitting) and learn the basics of paddling and canoe safety. While canoeing, all participants must wear a life jacket and adhere to all safety regulations.

Specialty Camps – Christie Lake Conservation Area

Bussing: Routes available from Hamilton, Burlington, and Brantford. See page 19.

YMCA Specialty Camps learn about the environment around them, and participate in a wide variety of activities focusing on nature education, science, and wilderness exploration. A fundamental attribute of Specialty Camps is the opportunity for campers to participate in Camper's Choice Block. The Camper's Choice Block takes place on Wednesday mornings, and campers have the opportunity to choose from five activity blocks including, Paddle Sports (Canoe/Kayak), Swimming, Sports and Archery, Shore to Shore Hike and Creative Crafts. Each Camper's Choice Block has a limited amount of space. Campers will choose their top three activity preferences and every effort will be made to give a camper their first choice.

PLEASE NOTE: To ensure campers spend as much time in specialty activities and boating as possible, Specialty Campers will swim three times a week, and have an opportunity to participate in swimming during Camper's Choice Blocks on Wednesday mornings.



Eco-Explorers

Ages: 8 – 13 Campers will be grouped by age.

Staff to Camper Ratio: 1:10

Sessions: 1 – 8

Fees: Sessions 1, 6 (short weeks)	\$212
Sessions 2 - 5, 7 – 8	\$265

Campers will learn about their environment and the world around them through exciting activities and wilderness games. Activities will focus on nature education, science, leave no trace principles, and a variety of different wilderness survival techniques. Themed activities will include air, water, animal tracks, eco-systems and more! Eco-Explorers campers will enjoy a full camp program including archery, arts and crafts and canoeing!



Canoe Skills

Ages: 8 – 13 Campers will be grouped by age.

Staff to Camper Ratio: 1:10

Sessions: 1 – 8

Fees: Sessions 1, 6 (short weeks)	\$226
Sessions 2 - 5, 7 – 8	\$282

For new and experienced paddlers! Instructors have developed fun activities that emphasize safety and the fundamentals of canoeing. Backpaddling, draw stroke, J stroke, your camper will learn it all! Campers will also participate in traditional camp activities like swimming, arts and crafts and archery. Campers must wear a life jacket while in the canoe. Campers will receive a skill assessment at the end of the week.



Kayak Skills

Ages: 10 – 13

Staff to Camper Ratio: 1:10

Sessions: 1 – 8

Fees: Sessions 1, 6 (short weeks)	\$238
Sessions 2 - 5, 7 – 8	\$297

For new and experienced paddlers! Campers will learn how to grip their paddle for an efficient stroke, how to control the kayak and more! No prior kayaking experience is necessary! Campers will also participate in traditional camp activities like swimming, arts and crafts and archery. Campers must wear a life jacket while in the kayak. Campers will receive a skill assessment at the end of the week.

* Canoe and Kayak Skills campers will be in the boats every day, and if unforeseen weather conditions, campers will be rescheduled to make up that time another day weather permitting.



Hamilton – Queen Victoria Public School

(166 Forest Ave)

Ages: 6-13 Campers will be grouped by age.

Staff to Camper Ratio: 1:10

Sessions: 1 – 7 (Session 8 is unavailable at this location)

Fees: Sessions 1, 6 (short weeks) \$192
Sessions 2 - 5, 7 \$240

Burlington – Tansley Woods Community

Centre (1996 Itabashi Way)

Ages: 6-13 Campers will be grouped by age.

Staff to Camper Ratio: 1:10

Sessions: 1 – 8

Fees: Sessions 1, 6 (short weeks) \$210
Sessions 2 - 5, 7 - 8 \$263



Brantford – Laurier Brantford YMCA

(100 Water St)

Ages: 6-13 Campers will be grouped by age.

Staff to Camper Ratio: 1:10

Sessions: 1 – 8

Fees: Sessions 1, 6 (short weeks) \$172
Sessions 2 - 5, 7 - 8 \$214



Community Camps



KidVenture Camp

KidVenture Camp provides campers with the opportunity to explore their creativity in a safe and fun environment. Activities include arts and crafts, drama & dance, swimming, co-operative games, science experiments and outdoor play. Each week, campers will have a special guest speaker.



Sports Camp

Sports Camp focuses on sportsmanship, participation and fair play, fitness and team spirit. Children have the opportunity to learn fundamental movement skills through fun and interactive activities. Activities include swimming, soccer, basketball, volleyball, football, team games and arts and crafts.

A Typical Day at Chippewa Christie Lake

9:00-9:30	Bus arrival/games with bus groups	12:45-1:00	Transition to Swimming
9:30-10:00	Flagpole (camp gathering)	1:00-2:00	Swimming
10:00-10:45	Hiking	2:00-2:15	Transition from Swimming
10:45-11:00	Snack/Sunscreen Application	2:15-2:30	Snack/Sunscreen Application
11:00-12:00	Low Organized Games or Outdoor Field Game or Team Building Initiatives	2:30-3:30	Canoeing/ Arts and Crafts/ or Archery
		3:30-4:00	Flagpole/Bus Lines/ Departure
12:00-12:45	Lunch/LOGS (low organized games)		

PLEASE NOTE: Christie Lake Conservation Area is an outdoor camp with covered pavilions available. During inclement weather, children will participate in low-activity games under the pavilions.

A Typical Day at Community KidVenture Camp

9:00-9:30	Flagpole (songs, skits, rules/routine reminders and introduction to the day)	12:00-12:45	Gym Games
9:30-10:15	Drama Games	12:45-1:30	Outdoor Play
10:15-10:45	Snack	1:30-2:00	Transition to Swimming
10:45-11:30	Art Activities	2:00-3:00	Swimming
11:30-12:00	Lunch	3:00-3:30	Transition back to Camp/Snack
		3:30-4:00	Flagpole

A Typical Day at Community Sports Camp

9:00-9:30	Flagpole (songs, skits, rules/routine reminders and introduction to the day)	11:30-12:15	Outdoor Field game e.g. Crab soccer
9:30-10:15	Skills and Drills e.g. Basketball	12:15-12:45	Lunch
10:15-10:45	Outdoor Sports Game (e.g. Touch Football)	12:45-1:15	Pool Transition
10:45-11:00	Snack	1:15-2:15	Swimming
11:00-11:30	Craft	2:15-2:45	Transition back to Camp/Snack
		2:45-3:30	Camp-wide game
		3:30-4:00	Flagpole



A Day at Camp



Helping Hands – Inclusion Support Program

Helping Hands offers 1:1 support for children with physical and/or developmental disabilities so they can enjoy a summer camp experience alongside their peers.

All children deserve the opportunity to make new friends, try new things and enjoy the exciting opportunities that are part of a summer experience.

Fees: Sessions 1, 6 (short weeks) \$354
Sessions 2-5, 7-8 \$442

Ages: 6 - 14

Location: Available at all Day Camp locations

As a camper attending one of our Day Camp programs, your child can receive 1:1 support from trained YMCA Helping Hands staff. This support enables your child to be included in all aspects of regular camp programming. The YMCA Helping Hands staff are trained to attend to the unique needs of children with physical or developmental disabilities including personal care and safety—while facilitating friendships, skill development, independence and fun!

How to Register

In order to provide the best fit and experience for campers, we ask parents to complete an application for the Helping Hands program when registration opens on Monday, March 18th at 8:00 am. This can be completed at ymcahbb.campbrainregistration.com

This application does not guarantee you a spot in the Helping Hands program.

Once your application has been submitted, a member of the Helping Hands team will reach out to confirm spaces available, and complete a more in-depth intake with you to learn how best to support your camper.

Due to high demand, spaces are not guaranteed or confirmed until a member of the Helping Hands team has reached out to complete the intake process and confirm your registration in the program.

We do not require any forms, or intakes to be completed before registration opens, and encourage families to complete their application as soon as possible given the demand for the program.

Children must meet the age criteria for the selected camp but after that, the choice is up to you and your child.

Registration is limited to two weeks per camper to give Day Camp opportunities to more children. Additional weeks may become available throughout the summer.

For more information about the Helping Hands program, please email hamburl.daycamps@ymcahbb.ca and put HELPING HANDS in the subject line of your email.

Leadership Development Programs



Leader In Training – Level 1

Location: Chippewa at Christie Lake Conservation Area. Bussing is provided

Sessions: 1 – 2, 3 - 4 *must attend a full two-week session

Prerequisite: Turning 14 years old in 2024

Fees: \$297

The Leader In Training program (Level 1) is an engaging program designed for participants to acquire camp related skills (canoeing, archery and large group leadership) while learning how to work as part of a team. Participants will learn about the YMCA and its core values. Participants will participate in activities geared towards group management, activity planning and team building. Participants will complete volunteer hours supporting a camper group during the second week of the program.

Leader in Training – Level 2

Location: Chippewa at Christie Lake Conservation Area. Bussing is provided

Sessions: 5 - 6, 7 – 8 *must attend full a two week session

Prerequisite: Turning 14 yrs old in 2024, completion of LIT Level 1

Fees: \$297

The Leader In Training program (Level 2) enhances the learnings of Level 1. While canoeing, swimming and playing games, participants will also learn the following skills through fun, creative sessions and hands-on experience. Participants will build on their skills and complete a placement within a specialized camper group in the second week of the program to develop their group management and leadership skills.

Leader in Training – Level 3

Location: Community Camp at Queen Victoria and Tansley Woods (Participants are responsible for their own transportation to Community Camp location.)

Sessions: 1 – 4, 5 – 8 (week 5 – 8 not offered at Queen Victoria)

Prerequisite: Completion of LIT Level 1 and 2

Fees: Free with completion of LIT 1 and 2

The Leader in Training (Level 3) (LIT) will have the opportunity to improve their skills by volunteering at a community camp and preparing themselves to be a Junior Counsellor in the following year. During this program, the LIT will have an opportunity to complete a 4-week placement at one of the day camp's community camp locations. The LITs will be responsible for observing and shadowing a camp counsellor at an urban camp program and during the last week, they will be responsible for delivering a large group game, a low organized game (LOG) and an arts and crafts activity.

All LIT campers will be guided through these sessions by our trained staff. A certificate outlining the LIT camper's achievement will be awarded to each participant.

Please see pages 9-10 (LIT 1&2) and page 12 (LIT 3) for locations. Staff to camper ratio is 1:15.

All participants will receive an emailed verification letter of up to 32.5 volunteer hours in September 2024 depending on attendance and participation.

Junior Counsellor Positions

Once LIT participants complete Level 3 and reach the minimum age of 16, they can apply to be a YMCA Day Camp Junior Counsellor (JC). JCs are responsible for attending pre-camp training, co-facilitating a group of campers with a staff member, and developing their own leadership style. Applicants who have completed the LIT levels and have demonstrated the competencies and skills for becoming a JC will receive first consideration. To apply, please visit our website at ymcahbb.com. This position is unpaid, however, JCs will be reimbursed with a bi-monthly honorarium. Applications open in March 2024.



Extended Camp Care Options

Extended Camp Care (ages 6-12)

Extended camp care is offered before and after camp at an additional fee. This safe, fun and supervised licensed child care environment is available at several locations.

- \$30/week; \$24/week (Weeks 1 & 6) - Burlington, Hamilton, Stoney Creek, Brantford
- Operates from 7:00 - 9:00am and 4:00 - 6:00pm
- Space in the extended care program is limited. Please register early to avoid disappointment.

Extended Care Location	Camps Served	Sessions
BURLINGTON		
Frontenac Public School – 5140 Pinedale Ave	Camp Chippewa	1 - 8
St. Mark School - 2145 Upper Middle Road	Camp Chippewa	1 - 8
Tansley Woods Community Centre - 1996 Itabashi Way	Tansley Community Camp Camp Chippewa	1 - 8
HAMILTON STONEY CREEK		
Chedoke Elementary School - 500 Bendamere Ave	Camp Chippewa	1 - 8
Stoney Creek YMCA Child Care Centre - 105 King Street East	Camp Chippewa	1 - 8
Queen Victoria School - 166 Forest Avenue	Camp Chippewa Queen Victoria Community Camp	1 - 8*
BRANTFORD		
Laurier Brantford YMCA	Camp Chippewa Laurier Brantford Community Camp	1 - 8

Extended care locations and times are subject to change based on availability.

Note 1: If you wish to enroll in extended care and attend Sports or KidVenture Community Camp, the Community Camp location and extended care location must be the same.

Note 2: Queen Victoria School extended care will be open sessions 1-7 for Sports and KidVenture, sessions 1-8 for Camp Chippewa.



Bus Routes – Available for Christie Lake Conservation Area

Preparing for the Bus Trip

- On the first day of camp, your child will be given a wristband colour corresponding to their bus – please leave this bracelet on for the remainder of camp as it will be used to identify your child at camp.
- All busses have at least one staff person (bus monitor) who rides the bus from beginning to end. **All children under the age of 16 must be signed out by an adult (over the age of 16).**

Bus Delays

- While we make every effort to adhere to the bus schedule, we place an emphasis on safety and ask parents to arrive 5-10 minutes before the scheduled time.
- Day Camp Senior Staff are in contact with the busses and track their progress to ensure safety for both campers and staff. Once underway, our schedules account for typical traffic, but busses may fall behind in case of major congestion on bus routes. The Day Camp Office will send an email blast to notify parents if there is more than a 15-minute delay from the scheduled arrival time.

Choosing a Bus Route

- The bus you choose to transport your child must be the same for drop off and pick up for the entire week. If your child requires more than one bus option throughout the summer, please contact the Day Camp Office at [hamburl.daycamps@ymcahbb.ca](mailto:daycamps@ymcahbb.ca) to ensure these changes can be reflected on your account.
- For extended care families, pick up and drop off must be completed at the extended care site.

Late Pick Ups

- Busses will wait for 5 minutes for children to be signed out before moving on to the next stop. Adults who arrive after the bus has departed must then pick up their child at their local YMCA. Parents will be charged a late fee if their child is not picked up by the end of the route.
 - Hamilton Busses (Lower City) - Downtown YMCA
 - Hamilton Busses (Mountain) - Les Chater YMCA
 - Burlington Busses - Ron Edwards YMCA
 - Brantford Busses - Laurier Brantford YMCA



Thomas
BUILT BUSES

Watch Your Step
ATTENTION À LA MARCHÉ

EMERGENCY
EXIT
ACTIVATION
RELEASE

EMERGENCY
DOOR RELEASE

CAUTION
USE DEF ONLY
(DRIVE EXHAUST FLAP)

ATTENTION
GNEE DE
COURS

Bus Routes

Hamilton Buses (Lower City)

Depart at (AM)	LOCATION	Drops off at (PM)	Extended Care Site
ORANGE OWLS (DOWNTOWN HAMILTON)			
8:25	Queen Victoria Elementary School, 166 Forest Avenue N	4:30	X
PURPLE PENGUINS (EAST END HAMILTON)			
8:05	Norman Pinky Lewis Recreation Centre, 192 Wentworth St. N	5:00	
8:20	Sir Winston Churchill Secondary School, 1715 Main St E	4:45	
RED RHINOS (HAMILTON E AND W)			
8:15	Dalewood Middle School, 1150 Main St. West	4:45	
8:30	Sir William Osler Elementary School, 330 Governors Road	4:25	
BLACK BIRDS (STONEY CREEK)			
8:25	Stoney Creek Day Care, 105 King St. East, Stoney Creek	4:35	X

Hamilton Buses (Mountain)

Depart at (AM)	LOCATION	Drops off at (PM)	Extended Care Site
BROWN BEARS			
8:15	Corpus Christi Elementary School, 25 Alderson Drive	4:55	
8:30	Chedoke Elementary School, 500 Bendamere Ave	4:35	X
GREEN GORILLAS (HAMILTON MOUNTAIN)			
8:05	École élémentaire Pavillon de la jeunesse, 105 High St.	4:50	
8:40	Spring Valley Elementary School, 99 Dunham Dr.	4:20	
GOLDEN GOOSE			
8:15	Les Chater YMCA, 356 Rymal Rd East	4:45	

Bus Routes

Burlington Busses

Depart at (AM)	LOCATION	Drops off at (PM)	Extended Care Site
BLUE BUFFALOS			
8:10	Frontenac Public School, 5140 Pinedale Ave	4:50	X
8:20	Ron Edwards YMCA 500 Drury Lane	4:35	
TURQUOISE TURTLES			
8:25	Tansley Woods Community Centre, 1996 Itabashi Way	4:40	X
MAROON MOOSE (BURLINGTON AND WATERDOWN)			
8:20	St. Marks Catholic Elementary School 2145 Upper Middle Rd	4:45	X
8:45	Allan A Greenleaf, 211 Parkside Drive, Waterdown	4:25	

Brantford Busses

Depart at (AM)	LOCATION	Drops off at (PM)	Extended Care Site
PINK PANDAS			
8:05	Assumption College, 257 Shellard Lane (Front doors of staff parking lot)	4:50	
8:20	Laurier Brantford YMCA, 100 Water St. (doors located on Water St.)	4:40	X
8:35	Three Bears Preschool, 160 Brantwood Park Rd, Brantford	4:30	



Preparing for Camp

Hours of Operation

All Day Camps operate from 9:00 am - 4:00 pm (if your child is taking a bus to Camp Chippewa – please refer to the bussing hours on page 21 and 22 for drop off and pick up times). If you require a longer camp day, extended care programs are offered at select locations. Please see page 18 for more information and extended care locations.

PLEASE NOTE: All day camp and extended care locations will be closed on Statutory Holidays:

- Monday, July 1st, 2024
- Monday, August 5th, 2024

Sign In and Out of Campers

Campers must be signed in/out by an adult 16 years of age or older. Camp Staff will ask for government issued photo identification every day.

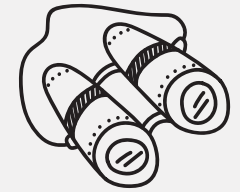
Campers will be released only to those authorized to pick up as indicated during the registration process on CampBrain.

Child Protection is an important aspect of YMCA programs. The YMCA of Hamilton, Burlington, Brantford follows YMCA Canada's Child Protection Policy which requires children to be signed out to authorized pickups. Please bring government issued photo identification every day in the event of staff changes. If authorized pickups do not have government issued photo identification, it may cause delays to pick up as we work with families to confirm authorized pick ups.

Late Sign Out

If a child is picked up past the time of the camp closure (or bus drop off), a late fee of \$20 per half hour or part thereof per child will be charged to the parent's account.

PLEASE NOTE: Sign in does not start until 9:00 am at Community Camps.



Personal Belongings

Please label all of your child's belongings with their first and last name and leave all valuables at home.

The YMCA is not responsible for any items your child loses at camp. The YMCA will not provide refunds for damaged or lost belongings.

Please label all clothing and belongings that come to camp. We suggest iron-on/stick-on labels or permanent marker for all items. Campers are expected to be responsible for their own belongings regardless of age. Your camper should help you pack their backpack each day so that they know what is coming with them to camp.

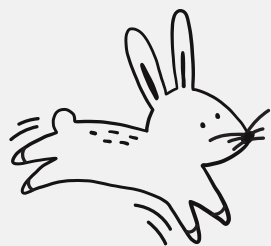
The YMCA cannot accept responsibility for clothing and/or equipment lost at camp or in transit. All clothing and belongings will be held at the on-site lost and found up to two weeks after the camp session. Any unclaimed belongings will be donated to a local charity after the 2 weeks have passed.

Campers are asked not to bring valuables to camp including personal toys, Pokémon and other gaming cards. No electronic devices (personal gaming systems, cellphones, etc.) are permitted at camp.

What Your Child Needs to Bring

- Running shoes (**To ensure your camper can participate fully in camp programming, please ensure they are wearing running shoes or sports-style sandals.**)
- Light jacket
- Sunscreen*
- Water Bottle (**Please ensure each camper has their own sunscreen and water bottle.**)
- Hat
- Weather appropriate extra clothing
- Swimsuit and towel
- Litter less and nutritious nut-safe lunch and snacks. **Campers are active and busy all day. Please ensure they bring a healthy lunch, snack and drinks (a reusable bottle is best) to nourish them throughout the day.**
- Bug Spray* (recommended for outdoor programming at Christie Lake Conservation Area)

* Sunscreen and Bug Spray cannot be shared between camper groups. As campers are divided by developmentally appropriate age groupings, siblings may be in different areas of the camp locations.



Medication at Camp/Extended Care

Day Camp staff can administer drugs/medication to a child when the parent/guardian has completed the Administration of Medication Form. All medication must be in the original container labeled with the child's name and prescription number (when applicable). Medication will be collected on the first day and returned on the last day of the camp week. Please send only enough medication for the week. For the safety of campers and staff, please do not send over-the-counter medication, like Advil or Tylenol with your camper to administer themselves. All medication must be handed to a Day Camp staff member with the completed form.

Allergies and EpiPens and inhalers

If you identify your child as requiring an EpiPen and/or inhaler for life-threatening allergies or any other prescribed conditions (example: Asthma), the EpiPen and/or inhaler will need to accompany your child to camp each day.

If your child requires an EpiPen and/or inhaler at camp, **you must complete the Administration of Medication Form and Anaphylaxis Medical Plan (EpiPens) and/or Individual Medication Plan (Inhalers)**. Please indicate whether your child's counsellor or your child will carry and administer the EpiPen and or/inhaler. If your child is attending camp with multiple medications (including an inhaler or EpiPen) each medication must have an accompanying form.

For their safety, they will not be admitted to camp without their EpiPen or inhaler and completion of above forms.

All forms can be found on our website at ymcahbdaycamps.ca.

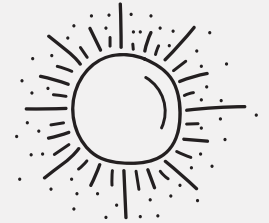
Behaviour Guidance Procedures

It's our goal to provide a healthy, safe and secure environment. The YMCA teaches core values through activities based on caring, honesty, inclusion, respect and responsibility. Children who attend programs are expected to follow the behaviour guidelines and interact appropriately within the group. Admission into and discharge from day camp will be at the discretion of the YMCA. On occasion, despite our Day Camp staff's efforts, there may be a situation where our program cannot reasonably meet the unique needs of a child.

The following guidelines are put in place to ensure all campers enjoy their camp experience. Failure to follow these guidelines may result in suspension or removal from Day Camps.

- People are responsible for their actions
- We respect each other and the environment
- Honesty will be the basis for all relationships and interactions
- We strive to make healthy and safe choices
- We will care for ourselves and those around us
- We value diversity and seek to include others

All children are expected to follow the YMCA behaviour guidelines, and to interact in a positive and appropriate manner with their fellow peers, staff, and other members of the YMCA Camp community. Behaviour (including but not limited to: violence, swearing, harassment; verbal threats; physical behaviour; running away; destructive behaviour etc.) that negatively impacts others physically or emotionally may result in dismissal or permanent removal from camp at the discretion of the YMCA of Hamilton|Burlington|Brantford.



Hot Weather Policy

YMCA staff will modify camp activities to accommodate for hot weather in order to ensure the health and safety of all participants. This will include frequent water breaks, water activities, less active games and the use of shaded and cooler areas of the camps. These precautions will allow all campers to enjoy a fun and safe camp experience, even on the hottest of days.

All camps will operate rain or shine. Please send your camper with appropriate rain gear, including Community and Outdoor Camps.



Online Registration

ymcahbb.campbrainregistration.com

Registration instructions for families in receipt of subsidy can be found at ymcahbbdaycamps.ca

Payment Schedule

Payments can be made:

- In full at time of registration
- In full post-dated on May 15th
- Post-dated and split between May 15th and June 15th

PLEASE NOTE: If you are in receipt of subsidy and registering online, you will need to post-date your payment to May 15th and June 15th to allow administration time to change your payment to reflect your contract. Families are responsible for indicating their receipt of subsidy at the time of registration, or risk being charged the full fee. Families must contact their subsidy worker to confirm summer camp subsidy. The YMCA highly encourages families to reach out as soon as possible to avoid processing delays.

Once the Post-Dated deadline has passed, payment is due at time of registration.

Pay online via VISA Credit, MasterCard Credit, or EFT (Direct Deposit information required for EFT includes: Transit Number, Institution Number and Account Number)

PLEASE NOTE: We do not accept VISA Debit or American Express. If you use a Visa Debit card, the system will accept the card, but will not process the payment. Parents will be responsible for making their missed payment within 3 business days and will be charged a \$10 service fee per failed transaction. Visa Debit users are **required** to use the EFT option, using Transit/Institution/Account number details.

Families can log in to their CampBrain accounts for access to receipts for tax purposes. If you need help accessing your account, please contact the day camp office.

We would be happy to answer any questions you may have about your child's Day Camp registration. Please contact us at 905-317-4929 or email hamburl.daycamps@ymcahbb.ca



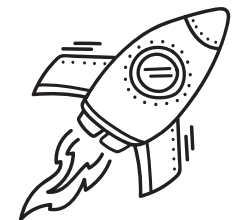
How to Register – Payment Methods & Financial Assistance

Registration Reminders

- **Payment details must accompany completed registration.**
- **Full or post-dated payments must be made on-line by Visa Credit, MasterCard, or EFT at time of registration.**
- Payments that are returned as NSF will be re-processed by the YMCA within 3 business days. A \$10 service charge will be applied to all returned payments. We cannot guarantee your camper's spot if payments are declined or outstanding as of June 15th, 2024.
- Registrations will not be accepted after Monday at 4:00 pm for attendance the following week.
- Families that indicate their child requires medication or an EpiPen at camp must ensure all forms are complete prior to the camp session. **Campers will not be able to attend until forms are complete.**
- Completed registrations will receive an email confirmation regarding the status of your campers enrollment.

Changes, Cancellations and Refunds

- One complimentary change will be permitted to families. Additional changes will result in a \$30 change fee for each emailed request. Changes include switching camp sessions, camp location or camp programs.
- Cancellations and changes to camp preferences must be made no less than 10 business days before the registered camp week.
- All changes or cancellations must be made in writing and emailed to **hamburl.daycamps@ymcahbb.ca**.
- All cancellations must be emailed, and any other method of cancellation, including voicemails and phone calls, will not be considered.
- Any refunds requested after May 14th, 2024 will be subject to a \$30 administration fee per camper registration.
- Refund Policy: Camp is non-refundable within 10 business days. Refunds within 10 business days must accompany a medical note which will be decided case by case by the Day Camp Manager. All refund requests must be submitted in writing to hamburl.daycamps@ymcahbb.ca
- Refunds are not issued for inclement weather or pool/ beach front closures or matters of environmental surroundings, including bug bites.





Financial Assistance Child Care Subsidy

Child Care Subsidy is available to families that qualify through the City of Hamilton, Brantford or Regional Municipality of Halton.

Registration limits for our Specialty Camps at Chippewa Christie Lake based on region.

- Hamilton - 2 weeks maximum
- Burlington - No limit
- Brantford - Cannot register for Specialty camps

There are no registration limits for General Camp Chippewa or Community Camps.

Please direct inquiries to:

- City of Hamilton - 905-546-4870
- City of Brantford Child Care Services - 519-756-3150
- Regional Municipality of Halton - 905-825-6000

YMCA Financial Assistance

Through the generosity of donors from across our community, the YMCA can assist with the payment of two weeks of YMCA Day Camp fees. If your financial circumstances are limiting your ability to register for Day Camp programs, please contact the YMCA to arrange a Day Camp Assistance appointment. All inquiries will be confidential. All appointments will take place virtually and booked through an online booking portal.

- For families residing in Hamilton, Burlington, and surrounding areas: 905-317-4929
- For families residing in Brantford and surrounding areas: 905-777-2473

How to prepare for your appointment:

- Complete your camper's online registration
- Post-date and split your payment between May 15, 2024 and June 15, 2024
- Bring supporting documentation (2023 Tax information, pay statements, government assistance statement, etc)

Charitable Mission

The YMCA of Hamilton|Burlington|Brantford is a charitable organization helping people achieve personal growth in spirit, mind and body.

Vision

Creating a vibrant and healthy community where everyone belongs and has the opportunity to reach their full potential.

Core Values

CARING, HONESTY, INCLUSION, RESPECT and RESPONSIBILITY.

ymcahbb.ca

Contact YMCA Day Camps:

905-317-4929

hamburl.daycamps@ymcahbb.ca

As an accredited member of the Ontario Camps Association and registered member of High Five, we deliver convenient, affordable and quality programs where everyone is welcome.



Charitable Registration # 10808 3825 RR001

